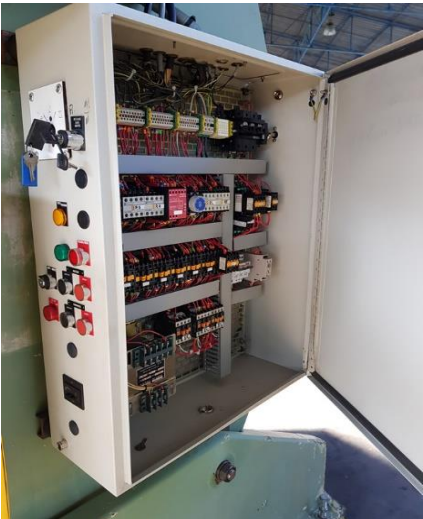


**C-FRAME PRESS  
ERFURT PEDN 63**

**TECHNICAL DATA**

<b>CAPACITY</b>	<b>63T</b>	
<b>VARIABLE STROKE</b>	<b>8-120 mm</b>	
<b>RAM ADJUSTMENT</b>	<b>70mm</b>	
<b>COUNTINUOUS STROKING RATE</b>	<b>56-90 s.p.m</b>	
<b>STROKING RATE</b>	<b>45 s.p.m</b>	
<b>DAYLIGHT</b>	<b>295mm</b>	
<b>TABLE AREA</b>	<b>770 x 610mm</b>	
<b>HOLE IN TABLE</b>		
<b>DEPTH OF THROAT</b>	<b>315mm</b>	
<b>RAM AREA</b>	<b>500 x 400mm</b>	
<b>MOTOR</b>	<b>6KW</b>	
<b>DIMENSION</b>	<b>WIDTH:</b>	<b>2000 mm</b>
	<b>DEPTH:</b>	<b>2000 mm</b>
	<b>HEIGHT:</b>	<b>2800 mm</b>
<b>WEIGHT OF PRESS</b>	<b>5,5T</b>	



F364